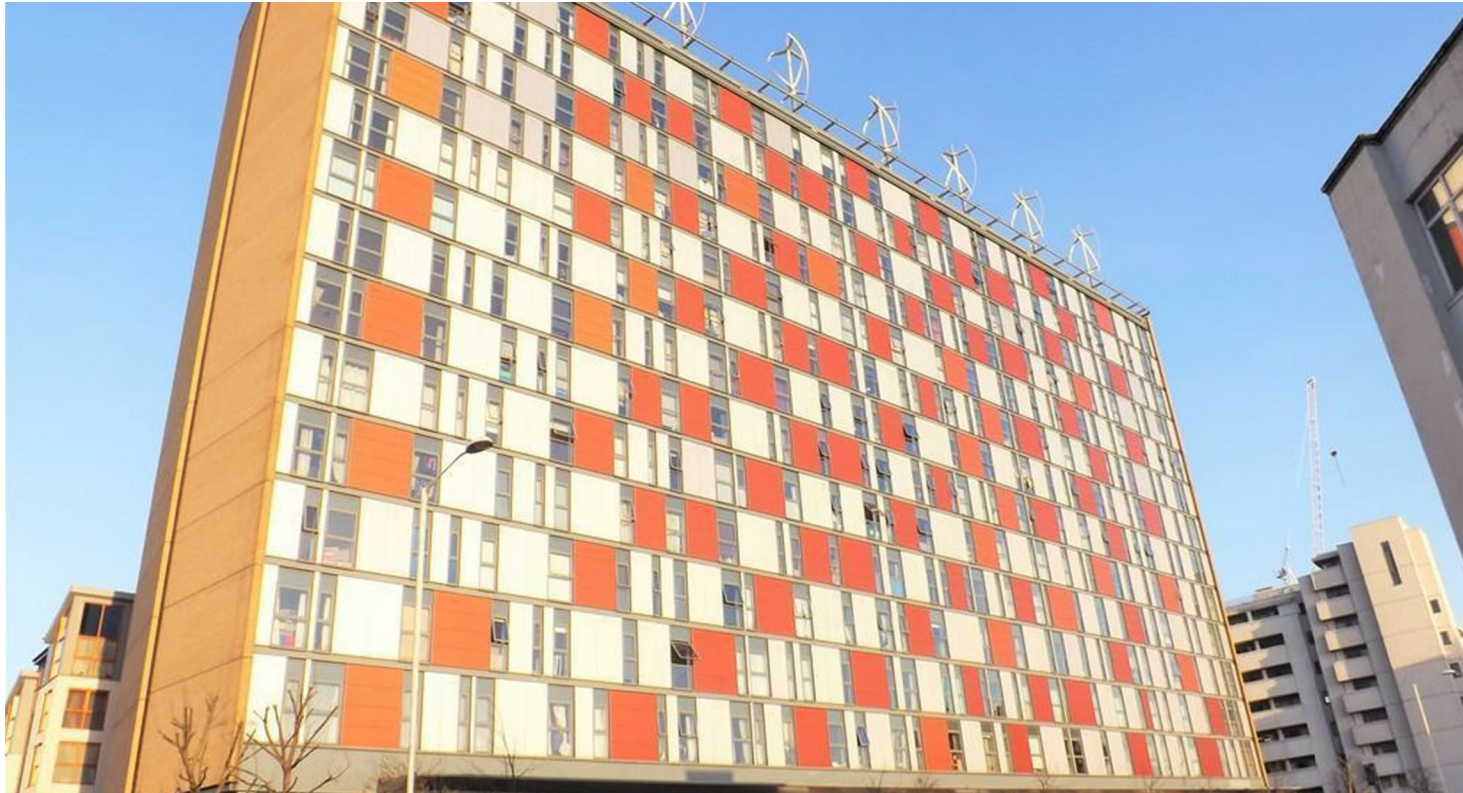




James Chiltern
Estate Agents



13, city house London Road, Croydon, CR0 2NS

Asking Price £250,000

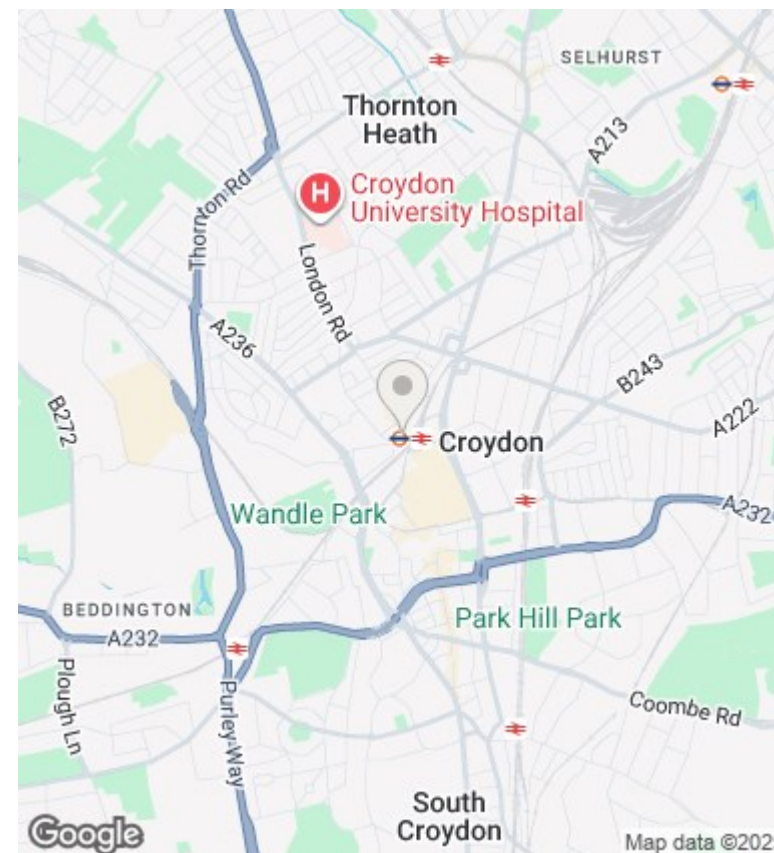
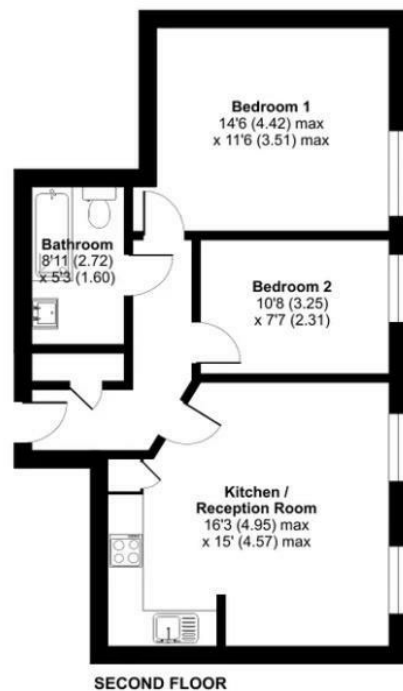
- 2-Bed Flat in City House
- Well Maintained
- Close to Shops & Amenities
- Chain-Free
- Open-Plan Kitchen & Living Room
- Prime Croydon Location
- Bright & Spacious Layout
- Modern Bathroom
- Excellent Transport Links
- Ideal First-Time Buy or Investment

182 London Road, Croydon, Surrey, CR0 2TE
0208 681 8133

lettings@jameschiltern.com
www.jameschiltern.com

London Road, Croydon, CR0

Approximate Area = 592 sq ft / 55 sq m
For identification only - Not to scale



Directions

Viewings

Viewings by arrangement only. Call 0208 681 8133 to make an appointment.

Council Tax Band

C

EPC Rating:

B

Energy Efficiency Rating		
	Current	Potential
Very energy efficient - lower running costs		
(92 plus) A		
(81-91) B	82	82
(69-80) C		
(55-68) D		
(39-54) E		
(21-38) F		
(1-20) G		
Not energy efficient - higher running costs		
England & Wales	EU Directive 2002/91/EC	